

# Sustainability at Bunge

Rob Coviello, SVP Sustainability & Government Affairs

August 11, 2020

# Sustainability governance



## Sustainability and Corporate Responsibility Committee

**Carol Browner** (Chair), Director of White House Office of Energy & Climate 2009-2011; Administrator of the EPA 1993-2001

**Eric Fyrwald**, CEO Syngenta 2016-present

**Vinita Bali**, CEO Britannia Industries 2005-2014

**Bernardo Hees**, CEO Kraft-Heinz 2015-2019; CEO Burger King 2010-2015



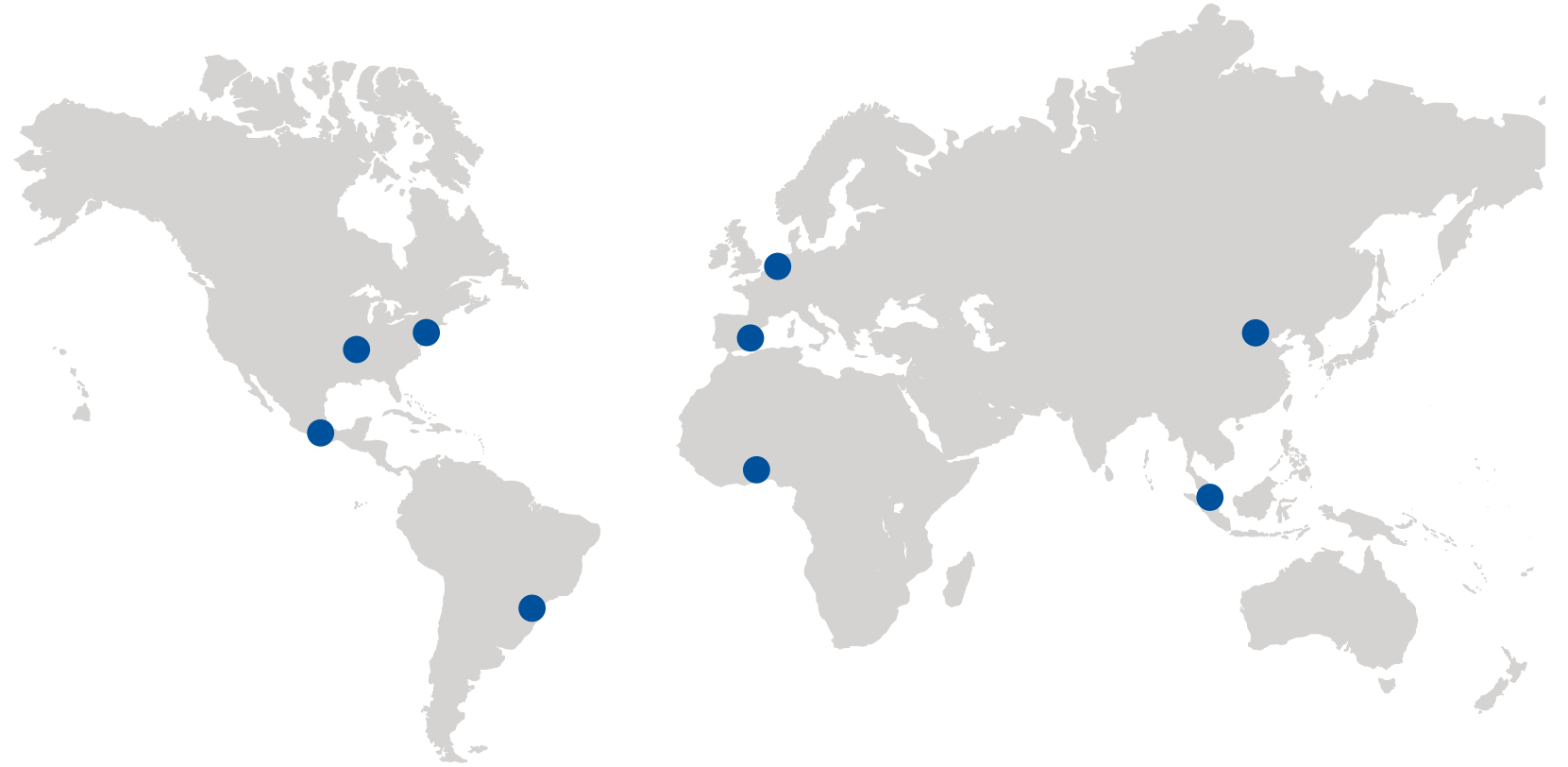
**CEO, Greg Heckman**



**SVP Sustainability & Govt Affairs, Rob Coviello**

# A global team with a local footprint

- Bunge's global sustainability team operates from 9 offices around the world.
- Team members are deeply connected to key business functions, including commercial, industrial operations, investor relations, government affairs, human resources, and communications.



# Sustainability is at the core of what we do

Three pillars encompassing our most material goals and activities



## Goal Area 1: **Action on Climate**

We implement innovative solutions to minimize our environmental footprint and support projects and activities that strengthen our approach to fighting climate change.



## Goal Area 2: **Responsible Supply Chains**

We promote sustainable agriculture and implement robust projects that protect and improve the environment, while supporting the social and economic well-being of growers and local communities.



## Goal Area 3: **Accountability**

We aim to be an accountable leader within our industry, helping to raise the bar on our sector's performance by regularly tracking and disclosing progress on our commitments and sustainability performance.



# Action on climate

## Environmental Goals

We're making good progress on our ten-year plan to reduce water, waste, emissions and energy use by 2026



**WATER**

**10% ↓**  
Overall



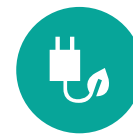
**WASTE**

**10% ↓**  
Disposal



**EMISSIONS**

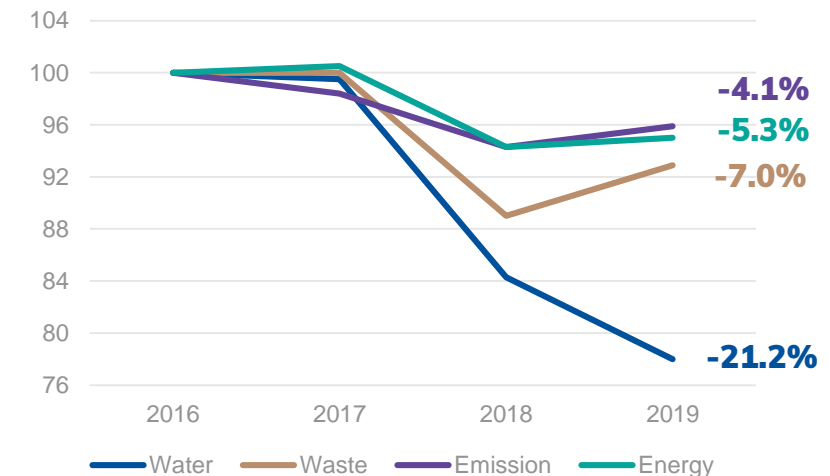
**10% ↓**  
Overall



**ENERGY**

**10% ↓**  
Consumption

**Environmental Goals**  
(reduction of units per mt of production)



For more information, visit: <https://www.bunge.com/sustainability/environmental-goals>



# Responsible Supply Chains

Promoting sustainable agriculture, and supporting farmers and local communities

- Sustainably sourcing our major commodities and respecting legally protected areas
- Respecting human rights and indigenous community rights
- Providing new opportunities for growers and farmers through innovative platforms



- Offering certified products based on market demand:

Product	Standard
 <b>Palm</b>	<ul style="list-style-type: none"><li>• Roundtable on Sustainable Palm Oil (RSPO)</li><li>• International Sustainability &amp; Carbon Certification (ISCC)</li></ul>
 <b>Soy</b>	<ul style="list-style-type: none"><li>• Biomass biofuel, voluntary sustainability scheme (2BSvs)</li><li>• European Feed Manufacturers' Federation (FEFAC)</li><li>• Renewable Fuel Standard (RFS2, EPA)</li><li>• U.S. Soybean Export Council (USSEC)</li><li>• International Sustainability &amp; Carbon Certification (ISCC)</li><li>• Round Table on Responsible Soy (RTRS)</li></ul>
 <b>Canola, Corn, Rape, Sunflower, Wheat</b>	<ul style="list-style-type: none"><li>• International Sustainability &amp; Carbon Certification (ISCC)</li></ul>



# Responsible supply chains - Soybeans



Achieving deforestation-free soybean supply by 2025

## Strategies

Develop traceable supply chains



Expand origination in open land & go zones



Incentivize sustainable expansion



## Deliverables

GPS coordinates and satellite monitoring

Sustainable land-use planning maps

Preferential financing for compliant suppliers

## Objective



Eliminate deforestation in our supply chain, reaching full compliance by 2025

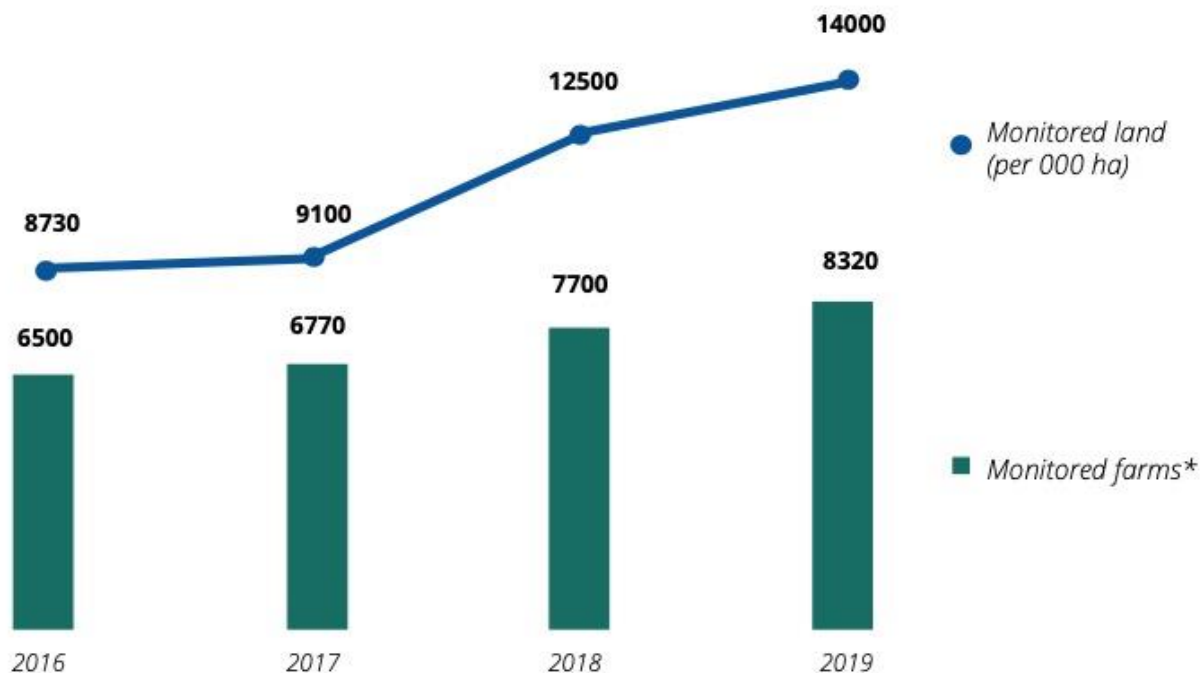


# Soy supply chain transparency

Since 2016, Bunge has disclosed traceability data for soy origination to direct source farms in high risk areas in South America. Our eighth progress report was issued in April 2020:

## MONITORING PROGRESS: 2016-2019

High priority regions in South America (BR + PY + AR)



\*Total number of monitored farms may be higher than actual sourcing farms. Bunge continues to monitor farms even when no longer buying from them.

## TRACEABILITY AND MONITORING

Bunge has achieved 100% traceability to all direct source farms in our supply chain, following updates to our database in 2020.

### DIRECT SOURCE SUPPLY<sup>1</sup>

**100%**

Volumes monitored from direct source farms in Argentina and Paraguay.

**91%**

Volumes monitored from direct source farms in Brazil. Smallholder farms represent the gap to reaching 100% monitoring in Brazil.

### INDIRECT SOURCE SUPPLY<sup>1</sup>

**100%**

Elevators mapped in Bunge's indirect sourcing supply in the Cerrado and Chaco.

**40%**

Volume of indirect sourcing in Brazil that has been engaged. Our 2020 goal is to engage 60% of indirect volumes.

### SOY CROPLAND OVER DEFORESTATION<sup>1</sup>

**0.7%**

Total monitored farms that have planted soy over recent deforestation, 2016-2019. A portion of this number is no longer in Bunge's supply chain. Remaining farms are in an engagement process.

<sup>1</sup>For more progress reports, visit: <https://www.bunge.com/sustainability/accountability>





# Responsible supply chains – Palm Oil



Achieving deforestation-free palm oil by 2025

## Strategies

NDPE policy implementation

- Legal compliance
- Environmental management
- Respecting human rights
- Social impact

Traceability

Transparency and engagement

Enhancing radar and satellite monitoring

## Deliverables

Using the NDPE Implementation Reporting Framework (IRF) to track and achieve supplier compliance

Reach 100% traceability to mill and plantation

Publish quarterly traceability and verification dashboards

Partner with industry peers and associations to promote sector transformation

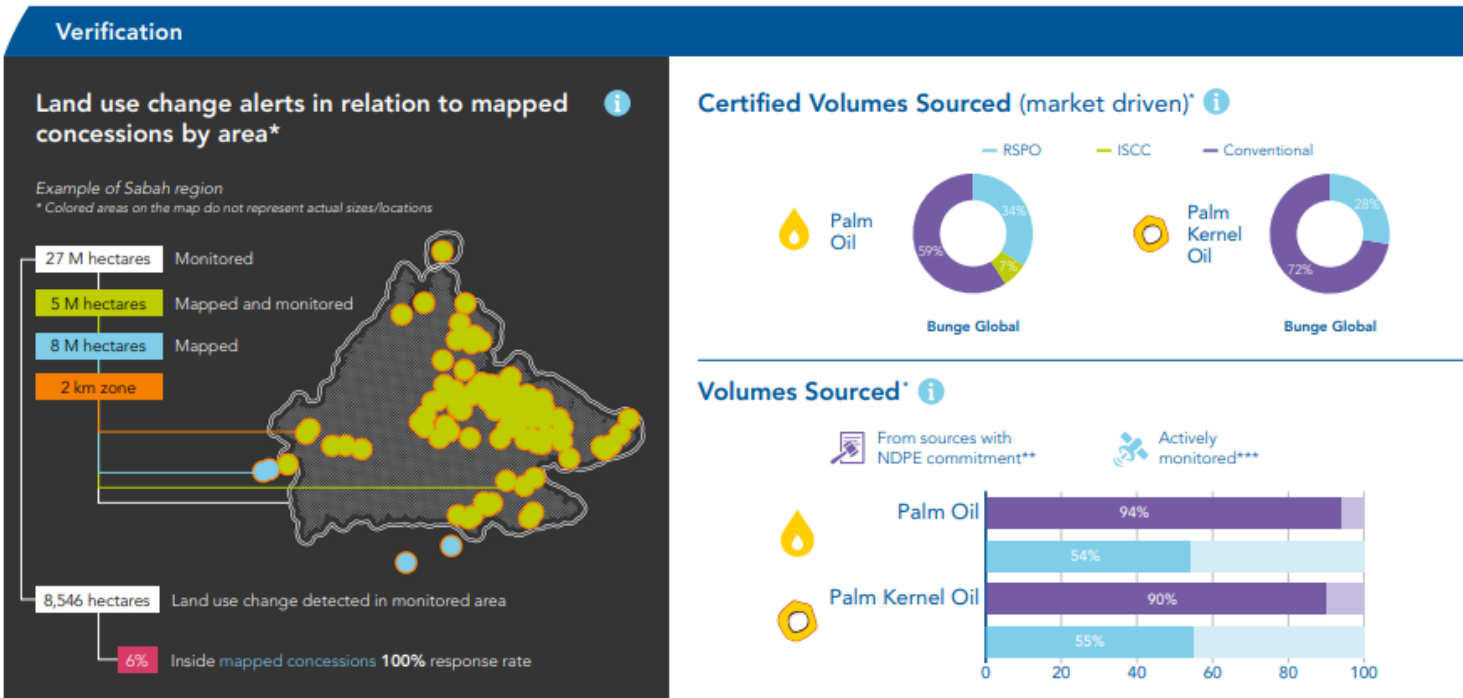
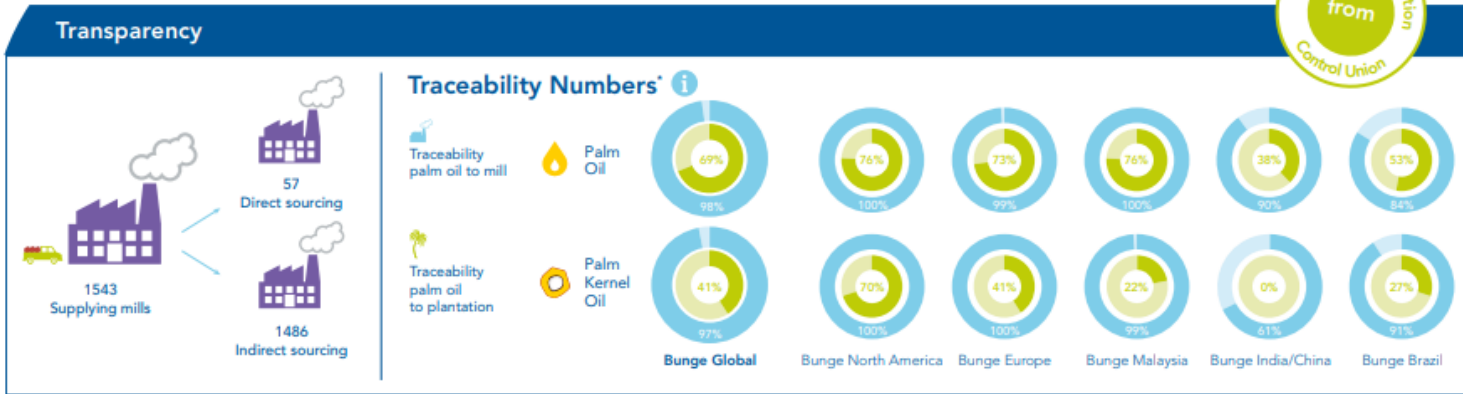
## Objective



Ensuring a legally compliant and traceable palm supply chain, that protects forests and biodiversity, reduces greenhouse gas (GHG) emissions and respects the rights of indigenous peoples, workers and local communities



# Palm Oil Dashboard



### Impact

JUNE 2020  
[BLC Collaboration with WWF Malaysia](#)

MARCH 2020  
[Peatland Rehabilitation and Conservation Program Update](#)

### Latest News

JULY 2020  
[Sustainability Newsletter](#)

JUNE 2020  
[Bunge Announces New Sustainability Approach](#)

MARCH 2020  
[Covid-19: Bunge's Commitment](#)

### Links

- [Sustainable Palm Oil Policy](#)
- [Grievance List](#)
- [Mill Lists](#)
- [Joint Overarching Report Sabah](#)
- [Palm Oil Sustainability Story Map](#)
- [Bunge's road to 2020 NDPE commitments](#)
- [Bunge Loders Croklaan Palm Sustainability Activities](#)
- [Palm Oil Traceability Protocol](#)

\* For more dashboards, visit: <https://www.bunge.com/sustainability/accountability>



# Accountability

## Sector leadership on ESG disclosure and transparency

### ESG Disclosures

- Bunge is a leader among our peers across many environmental, social and governance (ESG) disclosure platforms.

CDP	MSCI	ISS (E + S)
<i>Climate: B Forests: B- Water: B</i>	<b>AAA</b>	<i>Environment: 2 Social: 3</i>
<i>On a scale from A to F</i>	<i>On a scale from AAA to CCC</i>	<i>On a scale from 1-10, with lower numbers indicating lower risk level</i>

### Stakeholder Engagement

- Bunge is an active member of major trade associations and industry groups championing sustainable agriculture and collective action. These include:
  - Roundtable on Sustainable Palm Oil, Round Table on Responsible Soy, Abiove, Cerrado Working Group, Soft Commodities Forum, Global Shea Alliance, Field to Market, and more.